

The Koltiva logo features a stylized leaf icon to the left of the word "KOLTIVA" in a bold, white, sans-serif font.

KOLTIVA

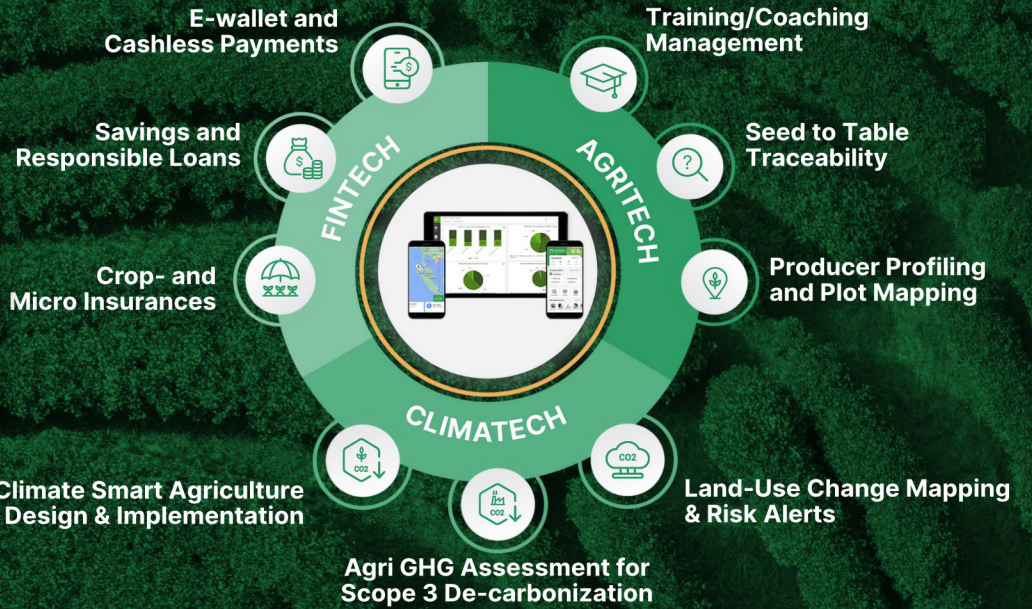


**Enabling Global Supply Chains
to be Inclusive, Climate-Smart,
and Traceable**

www.koltiva.com

As a **triple-tech company**, we combine **Fintech**, **AgriTech**, and **ClimateTech** with 'boots on the ground' for sustainable global supply chains.

Professional Services, **Beyond Traceability**.



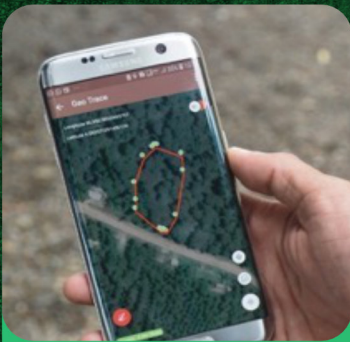
End-to-End Solutions for all Supply Chain Actors

KOLTITRACE

KOLTIPAY

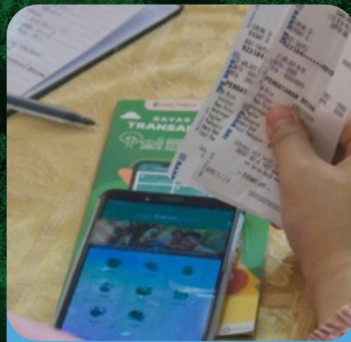
KOLTITRADE

KOLTISKILLS



TECH SOLUTIONS FROM SEED TO TABLE

Web, mobile, GIS, and IOT solutions empowering producers and businesses in global supply chains.



RESPONSIBLE DIGITAL FINANCE AND PAYMENTS

Integrated fintech platform for cashless payments, loans, savings, micro-insurance, and bill payments.



AGRI-INPUTS DISTRIBUTION AND CROP TRADING

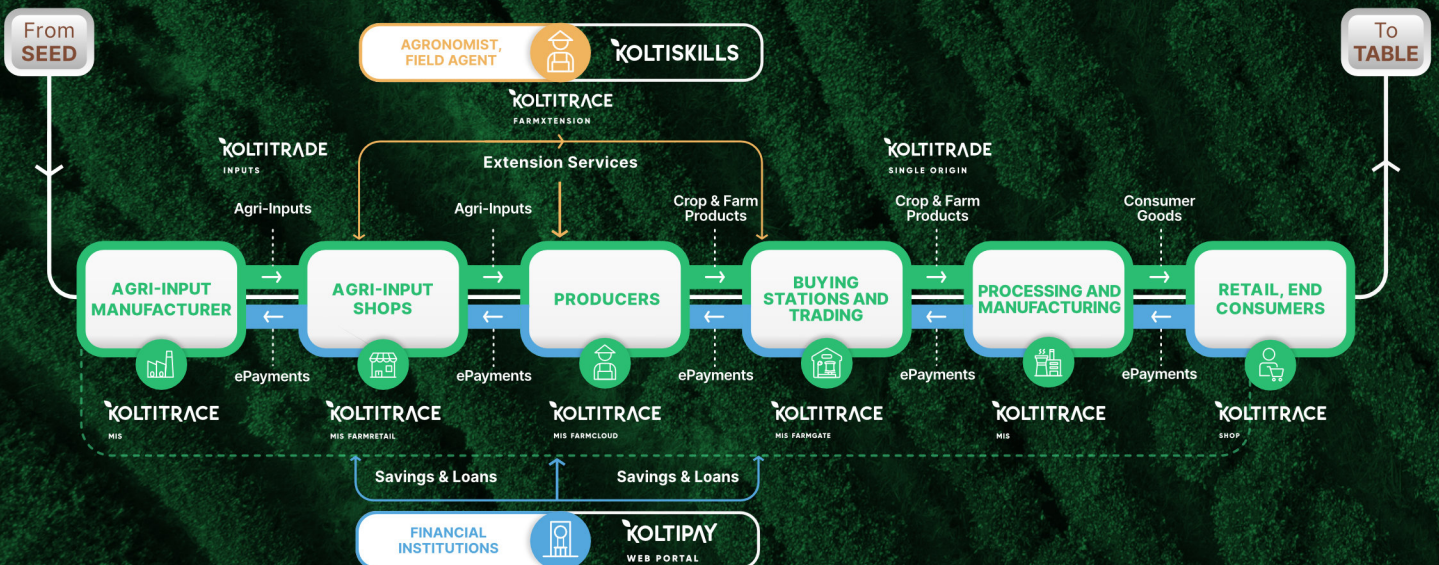
Distribution of high quality agri-inputs and single origin crop post-harvest processing and trading.



PROFESSIONAL SERVICES BEYOND TRACEABILITY

'Boots on the Ground' for extension services, farming support, and carbon monitoring.

Our Holistic Tech & Service Solutions



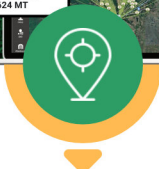
KoltiTrace MIS, Integrated Multi-Crop Platform for Businesses and Producers

Advanced Features for Verified Supply Chains



Geo Location & Mapping Features

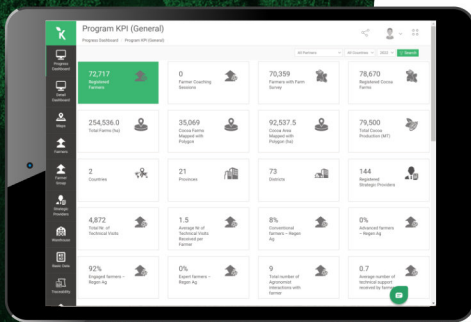
The leading management information system platform enabling large businesses to control farm operations, make data-driven decisions, cost optimization and improve yields with proven system of traceability, from seed to table.



Traceability from Seed to Table

With provenance information, data will be traceable and reproducible. Farming data collection, farmers and producer data profile, with verified digital transaction from seed to table.

Farmer Supply Chain Management



Verify traceability from independent smallholder producers, collectors, and traders to its warehouses, processing facilities, and retailers to the end customers.

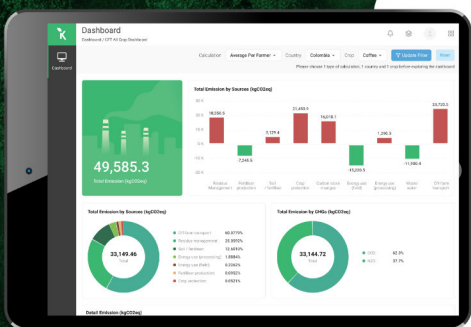


Comprehensive KPI dashboard. Monitor producer's demographics, complete profile, training progress, coaching sessions data, and transaction history.

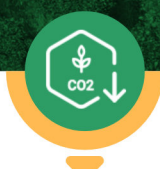


Access can be used by management, warehouse/trading staff, suppliers, buyers, and project donors. Each access group can be fully tailored to comply with data sharing agreements and data privacy policies.

Supply Chain GHG Assessment



Detailed GHG emission profile for raw material up to factory gate. You can see absolute GHG emissions or GHG emission factor per ton material sourced.



Emission Reduction Opportunities based on local potential for emission reduction and cost of intervention. See a comprehensive and easy to understand Value for Money in \$ / tCO2e of possible actions.



Easily survey growers and suppliers via mobile apps to understand GHG profiles specific to your supply chain.

Land Use Change



Provide historic Land Use Change (LUC) emissions of productive farms in the supply chains globally for any crop.



We apply best practices on forward accounting of direct LUC into the productive phase of the farm in your supply chain.



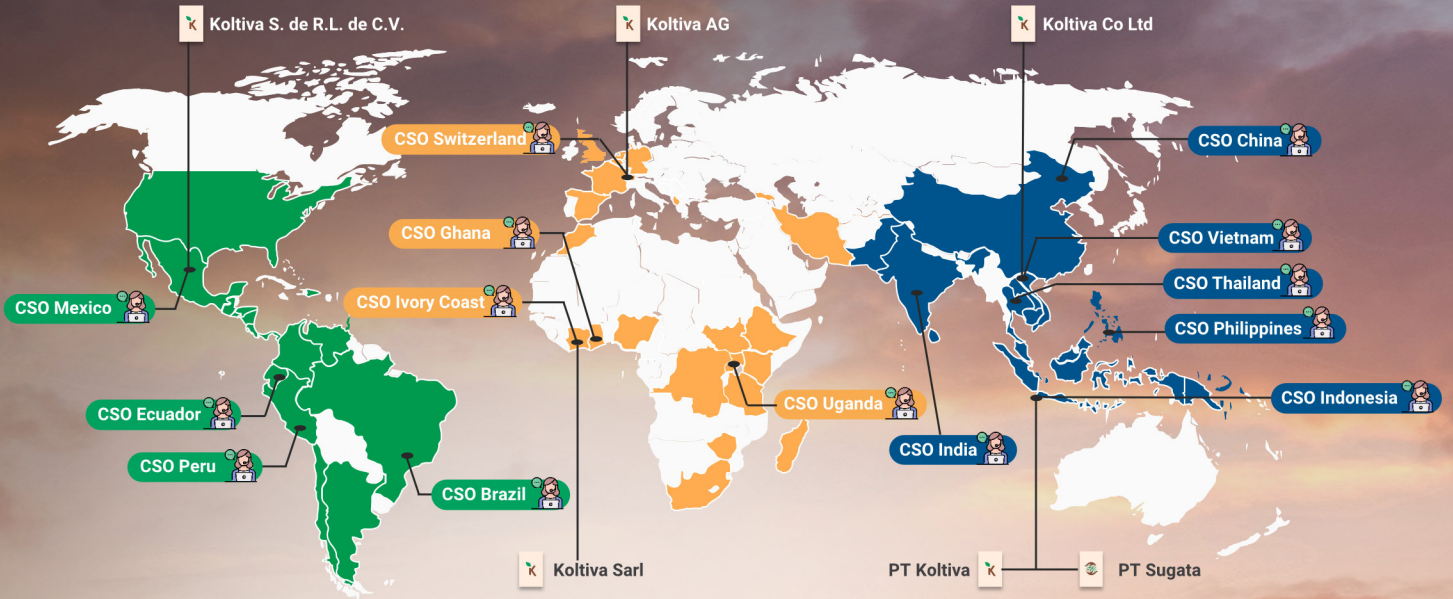
We include regionally measured carbon stocks, post-deforestation perennial crops, CO2, N2O, and CH4 emissions and calculate to-ton carbon dioxide equivalent (tCO2e).

Forest Area

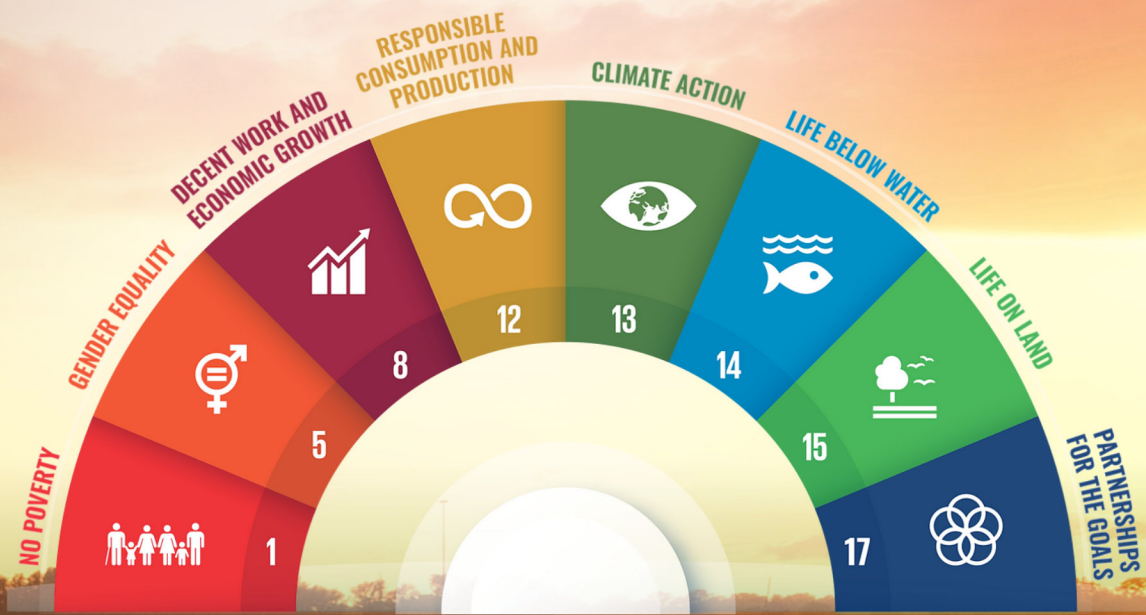
Farm Polygon

Deforestation farm area in

Connect Globally for a Sustainable Future



Take Action for the Sustainable Development Goals



Beyond Traceability

PT KOLTIVA

RA Mampang Office, 6th Floor
 Jl. Mampang Prapatan Raya
 No. 66 A - 66 B Mampang Prapatan
 Jakarta Selatan, Indonesia 12790

KOLTIVA AG

Baselstrasse 8
 4532 Feldbrunnen
 Switzerland

KOLTIVA SARL

Arsène Usher Assouane 99
 Riviera 3, Cocody,
 Abidjan,
 Côte d'Ivoire

KOLTIVA SRL de CV

Colima 161 Exterior,
 161 en el piso 6 Oficina 6011
 Roma Norte Cuauhtémoc,
 CDMX, Mexico City, 06700 Mexico

KOLTIVA Co. Ltd.

41 - 47 Đông Du, Phường Bến Nghé,
 Quận 1, thành phố, Hồ Chí Minh
 Việt Nam

PT KOLTIVA

Jl. Batur Sari No. 20 SB,
 Sanur, Denpasar Selatan
 Denpasar City, Bali
 Indonesia 80228

PT KOLTIVA

Artech Space
 Jl. Sagan Kidul No. 14
 Yogyakarta, 55223
 Indonesia

PT KOLTIVA

Miles Coworking Space
 Jl. Jambu, Losari
 Ujung Pandang, Makassar
 South Sulawesi, 90113 Indonesia

See Our Journey



www.koltiva.com